

Author



Martin Kolka

Reviving the dead SX1

instructions

Issued on: 20/02/2005

Average rating: 3.4 (rated 36x)

If your SX1 remained dead after a failed firmware update (due to a computer error or power outage), don't despair, here are instructions on how to revive your pet!



Using the procedures or programs listed below is not in accordance with the warranty conditions of the phone manufacturer. By using them, you run the risk of not recognizing the warranty on the device in the event of damage to it.



This instruction can, without perfect understanding of the procedure, lead to damage to your phone (even permanent). Before starting work, read it all thoroughly and if you have any ambiguities, consult them in advance on the designated [discussion forum](#) !



What will we need:

FW winswup for SX1 14(15)



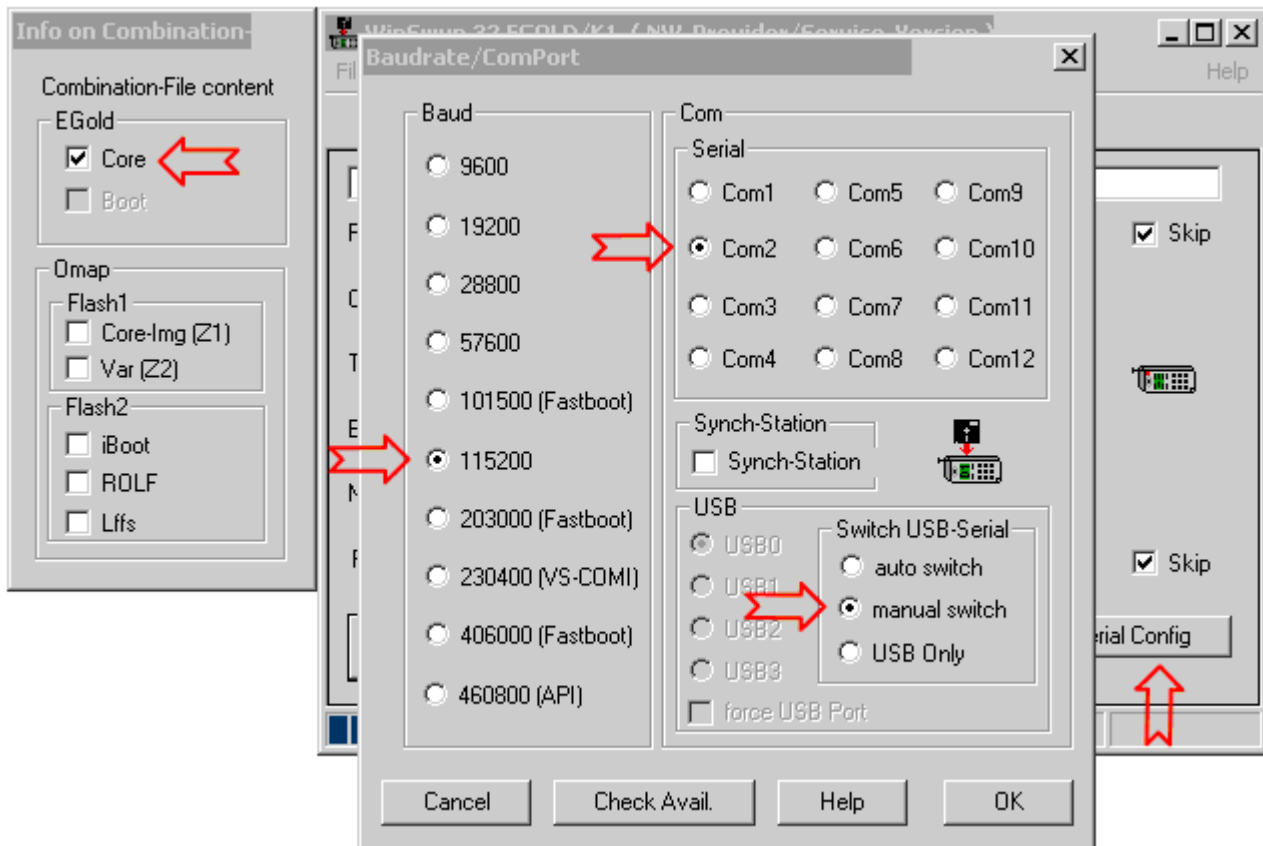
COM service cable for x55 board

USB cable supplied with the SX1

To revive, we will need firmware ver.8 or higher, I recommend 14CZ or 15INT. It doesn't work on lower versions.

We've downloaded the software, so let's play Silicon God.

1. With the computer turned off (as it should be), connect the COM service cable to the PC.
2. Start Winswup's update and set **manual switch in Serial config** , leave the correct COM port number and speed at 115200. Confirm the settings with the OK button. 3. Next, uncheck all the options in the left window, leaving only **EGold – Core** checked.



4. Connect the switched off SX1 to the cable (not in swup mode). And in the update, we click on the "Start" button and briefly press the red handset on the phone. After completing this update, the phone should switch to swup mode.

5. Now just do a normal firmware update using the USB cable supplied with the SX1.

Future FAQ:

Since you will definitely have some questions, I will answer some of them in advance:

1. It is not necessary to have a test point for this guide.
2. It is also possible to use a USB service cable for x55, but you must have an emulated COM port.
3. Unfortunately, or rather, I did not try the instructions personally.

Additional instructions:

- instructions on how to update SX1 <http://www.siemensmania.cz/content.php?id=47>
- COM port emulation <http://www.siemensmania.cz/content.php?id=25>

The author of the instructions is Goblin (www.oslik.ru). Translated and edited by Sirus.

No one may copy graphics, texts or anything else from these pages without the permission of the authors. All information published on this site is intended for educational purposes only and may not be used for commercial use or in violation of laws. The authors are not responsible for inappropriate use of data from these pages.

©2003-2004 Radim Zeman | ©2004 Roman Gregor